



UB9019E(V Brake) Assembly Manual

PACKING LIST (V brake type)



Front frame: 1set



Rear frame: 1set



Box Cover: 1 set Rain Cover : 1set



Wooden plate:1 set



Front wheel set: 2 wheel



Clay plate: 4pcs
Screw: M5*12, round cross 8 pcs
Washer: Ø5 8 pcs
Nylon nut: M5, 8 pcs



Handlebar bushing: 2 pcs
Bushing of Canopy tube: 4 pcs



Screw: M6*30, Cross flat head screws, 4 pcs
Nylon nut: M6, 4 pcs
Plastic guide roller : Ø6, 4 pcs



Canopy tube: 2 pcs



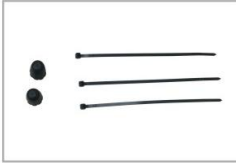
Angle iron (two long two short): 4 pcs



Steel rail (bend): 1pc Main axle: 1pc
Steel rail (straight): 2pcs Ladder block: 1pc



Front Brake cable: 2 pcs
bend tube for V brake: 2 pcs
Line tail cap: 2 pcs



Ribbon: 3 pcs
Pretector cover: 2 pcs



Screw: M6*30, Cross flat head screws, 8 pcs
Cap nut: M6, 8 pcs



Saddle: 1 pc



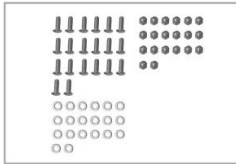
Foot step: 2 pcs
Screw: M6*18, Cross flat head screws, 4 pcs
Cap nut: M6, 4 pcs



Pedal: 1 pair



Screw: M6*70, Round cross, 2 pcs
Washer: Ø6, 2 pcs
Nylon nut: M6, 2 pcs



Screw: M6*18, Cross flat head screws, 20 pcs
Washer: Ø6, 20 pcs
Cap nut: M6, 20 pcs



Screw: M8*25, 7 pcs
Washer: Ø8, 7 pcs
Nylon nut: M8, 7 pcs



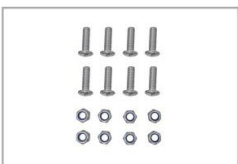
Seat post: 1 pc



Safety belt: 4 pcs



Front reflector: 2 pcs
Side reflector: 4 pcs



Screw: M6*20, Cross flat head screws, 8 pcs
Nylon nut: M6, 8 pcs



Self tapping screw: M4*25, 4 pcs



Screw: M6*35, Cross flat head screws, 4 pcs
Nylon nut: M6, 4 pcs



Charger: 1 pcs



Front light : 1 pc
Screw: M5*12, round cross, 1 pc
Washer: Ø5, 1 pc



Bell: 1 pcs



picture 1



picture 2

1. Assemble Front Frame & Rear Frame



picture 3



picture 4

Take out main axle set (picture 2), insert it to the center hole above front frame from top to bottom (picture 1), knock it to the end. Turnover the front frame, put bearing & bowlware successively. Mount the main axle set onto head tube of rear frame. Note: do not make wrong direction (picture 4).



picture 5



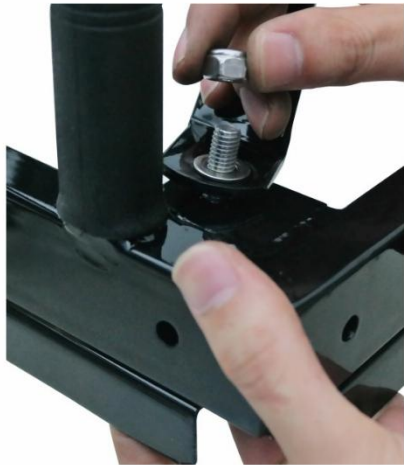
picture 6



picture 7



picture 8



picture 9



picture 10



picture 11

Put bowlware & bearing & rapezoidal steel plate & washer & spring washer & nut, preparatory tight (picture 5 & 6); According to picture 8 & 9 & 10, assemble two support steel and tight them (picture 11); Use M8X25 outer hexagonal bolt, washer & nylon nut (picture 7).



picture 12



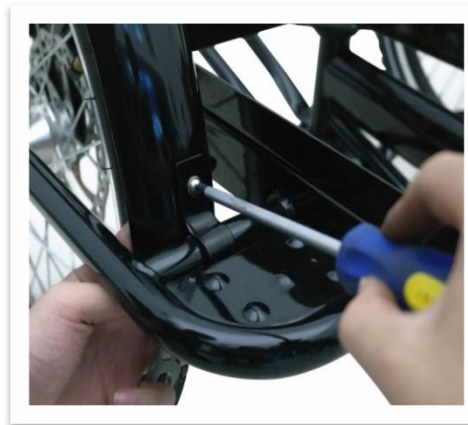
picture 13



picture 14



picture 15



picture 16



picture 17

2. Assemble Front Wheel & Front Fender

Mount front wheels to the both side of front frame hooks respectively (Note: do not make wrong tyre direction), tight after upstraight (picture 13 & 14); Mount front fenders above tyres respectively, then mount the small holding plates, put screws and tight it (picture 12 & 15 & 16); Use M5X12 round head cross, washer & nylon nut (picture 17).



picture 18



picture 19



picture 20

3. Assemble Angle Steel

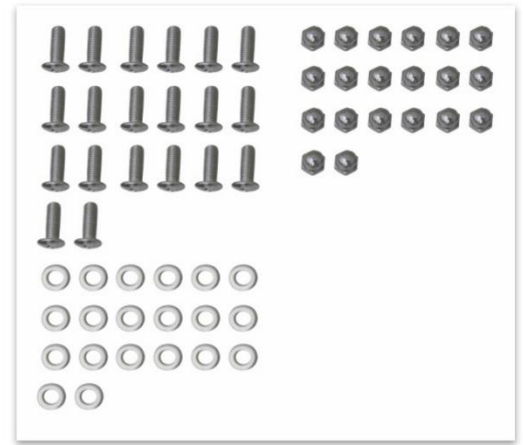
Mount angle steels onto the four corners of front frame. Please be careful do not make wrong position & direction. (picture 18 & 19). Use M6X30 big flat head cross screw with cap nuts.



picture 21



picture 22



picture 23



picture 24



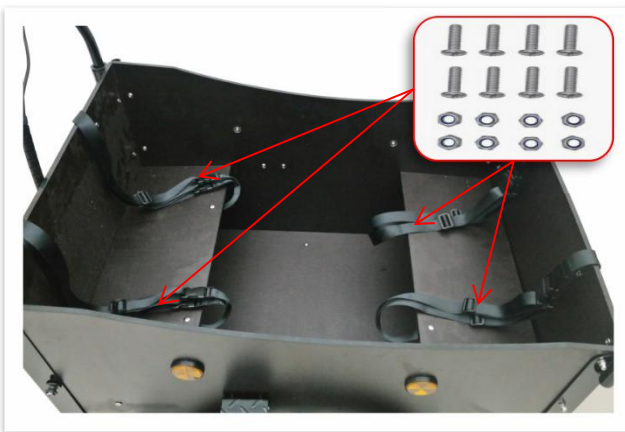
picture 25



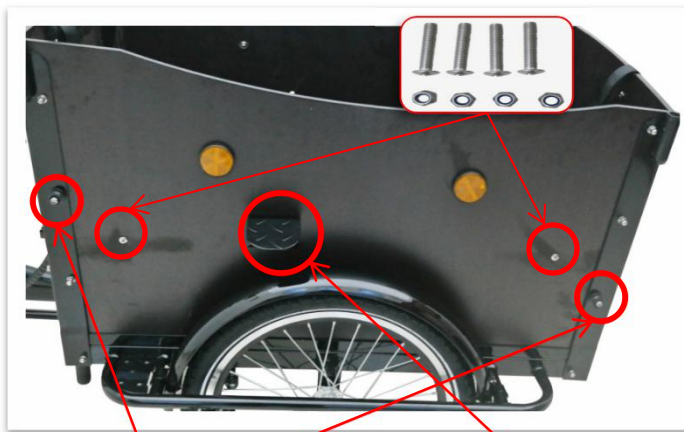
picture 26

4. Assemble Front Box

Mount the wooden plates onto front frame respectively, use M6X18 big flat cross screw & washer & cap nuts for angle steels, then tight (picture 21 & 22 & 23). Use M4X25 self-tapping screws for the 2 seat plates (picture 25 & 26). Insert the handlebar bushing and canopy bushing inside of angle steel (picture 21 & 22 & 24).



picture 27



picture 28



picture 29



picture 30



picture 31



picture 32



picture 33

5. Assemble Safety Belts & Reflectors & Foot Steps & Guide Rollers & Front Light

Mount the safety belts onto seat plates respectively, use M6X20 big flat cross screw & nylon nut, then tight (picture 27). Use M6X35 big flat cross screw & nylon nut for panel holes of seat plates, then tight (picture 28). Mount yellow refelectors onto side plates, white reflectors for front plate (picture 28 & 29 & 30); Mount foot steps onto side plates (picture 28 & 32). Mount guide rollers onto both sides of angle steels (picture 28 & 31). Mount front light onto front tube (picture 30 & 33).



picture 34



picture 35



picture 36



picture 37

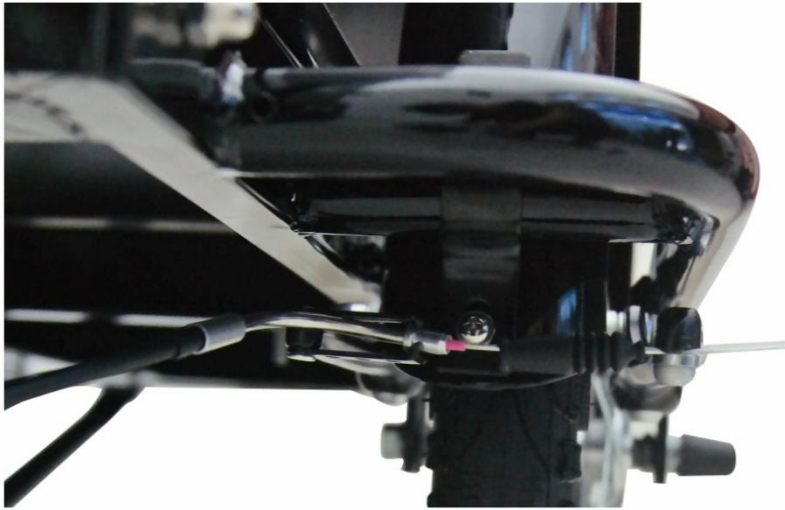


picture 38

6. Assemble Handlebar & Box Cover

Insert the handlebar inside handlebar's fixed tube, adjust to suitable height, twist M8X20 socket hexagon screw, then twist M8 normal nut (picture 34 & 35).

Take out box cover, put it on the top of front box (Note: the hole side is on the back), fasten sticking band, and hang the rubber band on the guide roller (picture 36 & 37 & 38).



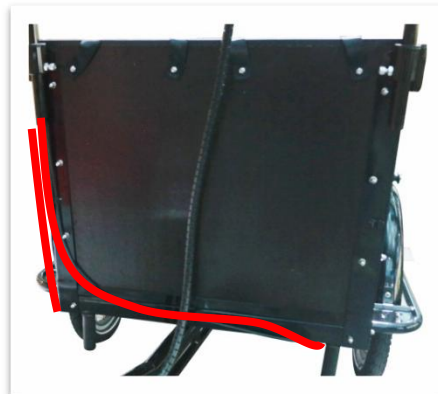
picture 39



picture 40



picture 41



picture 42



picture 43

7. Wear Brake Cable & Adjust V Brake

Take out brake cable, V brake accessories and cable tips. Firstly wear brake cable (please note direction) (picture 41 & 42); Wear hook and extension tube onto both side of wire end, put V brake, adjust brake block twist bolts and adjust it (picture 39 & 40)



picture 44



picture 45



picture 46



picture 47

8. Assemble Canopy & Recharger

Take out canopy tube and canopy. Insert canopy tube inside of bolster, then put canopy on the top (Note: hole side is on the back), sticking band, hang rubber band on the guide roller (picture 44 & 45); Insert recharger plug inside charging hole when charging (picture 46&47).